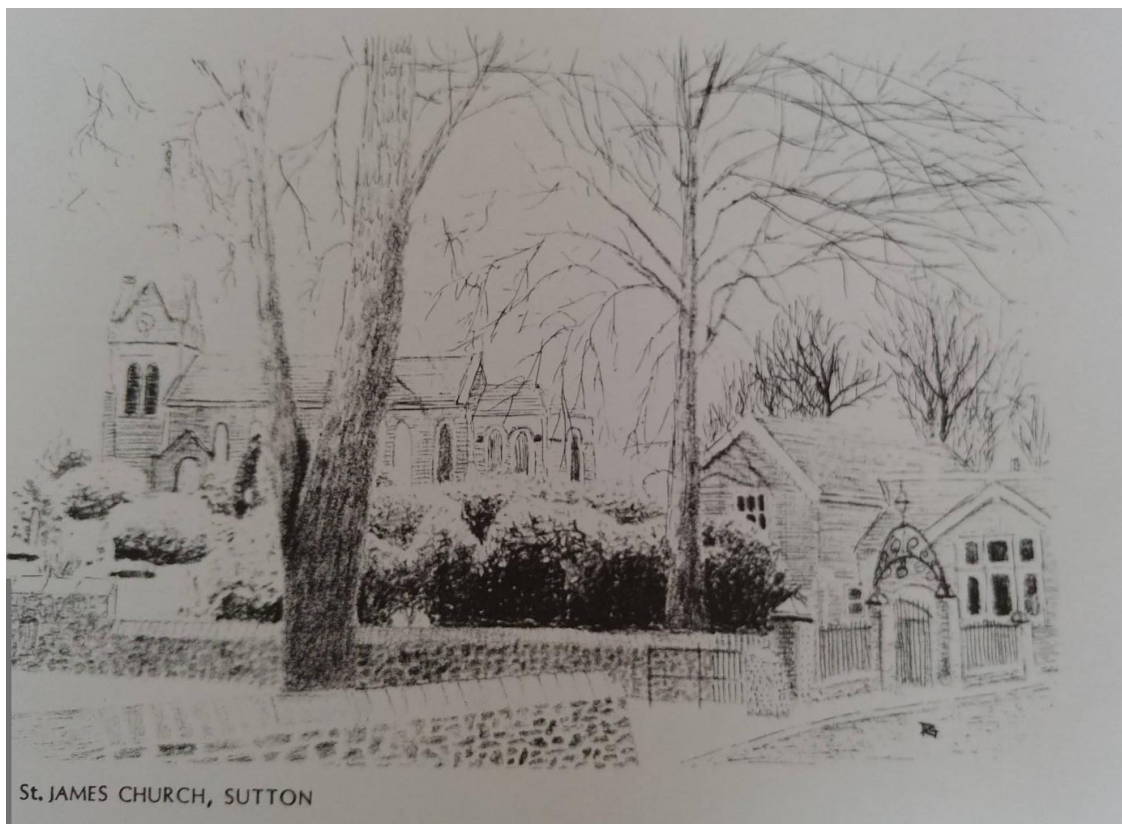


Sutton St James Church Hall Refurbishment Project



Summer Update July 2021

Summer Update

The Sutton St James Church Hall Refurbishment Project was launched by the Sutton St James Church Parochial Church Council in early 2021. The current building is aging and in need of repair and the community is in need of support and opportunities to come together post pandemic.

Project objectives:

REPAIR



To preserve the space for the future. Specifically:

- Complete refurbishment of pitched roofs: repairs, insulation and reroofing with new and re-claimed slates (Not done in 1971!), new insulation and single ply roofing to flat roof sections.
- Tanking to rear and side walls which are below ground level. This will also enable better use of dry storage space.
- New central heating system.
- Overhaul, repair/ replacement to wood block floors, windows, rain water goods, drains and stonework.

DEVELOP

To develop an inviting and welcoming venue, a fully accessible shared community space, a building equipped to meet the changing needs of the Church and local community. Including:

- An extended entrance area with new toilet facilities and separate access to a new first floor Parish Office .
- Enlarged kitchen with new cupboards, work surfaces, appliances, and white goods to meet hygiene standards.
- Redecoration.
- New furniture, curtains etc.



FUND

To secure funds to successfully deliver the works to complete in early 2022.

- Grant application work has started and further applications will be made.
- Pledges via Annual Gift Day 24th July 2021—funds raised being calculated at present.
- Traditional fundraising events once pandemic restrictions are fully lifted and allow.

Sutton St James Church Hall Refurbishment

Summer Update

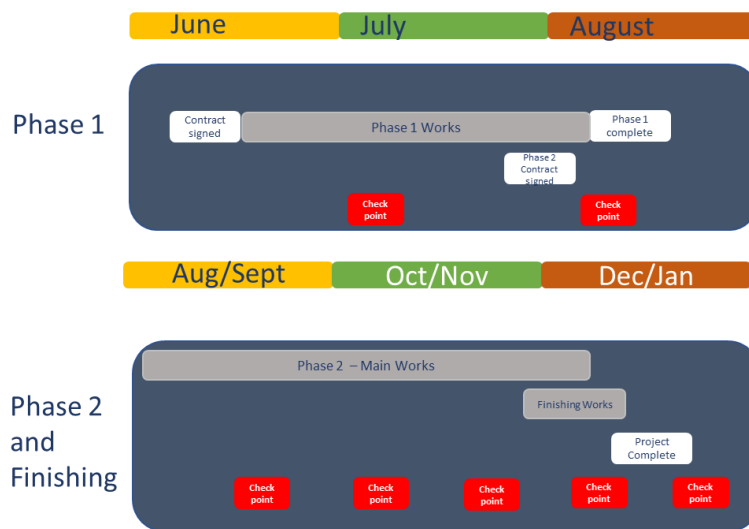
Project Status

Refurbishment works of the existing Church Hall was originally split into two phases:

Phase 1 - Improved, fully accessible toilet facilities and provision of an office/meeting space on the first floor, followed by **Phase 2** - Conservation of stonework, reroofing and internal refurbishment works including: an economical and ecologically friendly solution to heating; safe, accessible, fit for purpose catering facilities; improved access for full inclusion for disabled users of the space.

Phase 1 has hit key planning milestones with work underway due to complete mid August. **Phase 2** was designed to stand alone subject to securing additional funds. **Finishing Works** have been separated out and will be subject to a final contract with the contractor.

In order to achieve the most cost effective and timely programme of works, finishing works have been separated from Phase 2 which has been given the go ahead to proceed based on funds available.



Measures:

It is important to us that the project has a measurable impact on the beneficiaries across our local community and we'll be seeking feedback from users of the space on a regular basis about their visitor experience. The local community is growing. There are two major house building works underway/in the pipeline within the parish – the potential beneficiaries and demand for the building is therefore increasing.

As we emerge from the Pandemic which has seen activities and services catastrophically curtailed, quantifiable measures include:

- Higher building occupancy rate.
- Longer opening hours for drop in services.
- Higher group and event attendance numbers.
- Increased rental income.
- Increased volunteer numbers.
- Increased number of church events hosted.
- Lower annual maintenance costs.
- Improved user feedback (via visitor experience forms and suggestion box for example).

Sutton St James Church Hall Refurbishment

Summer Update

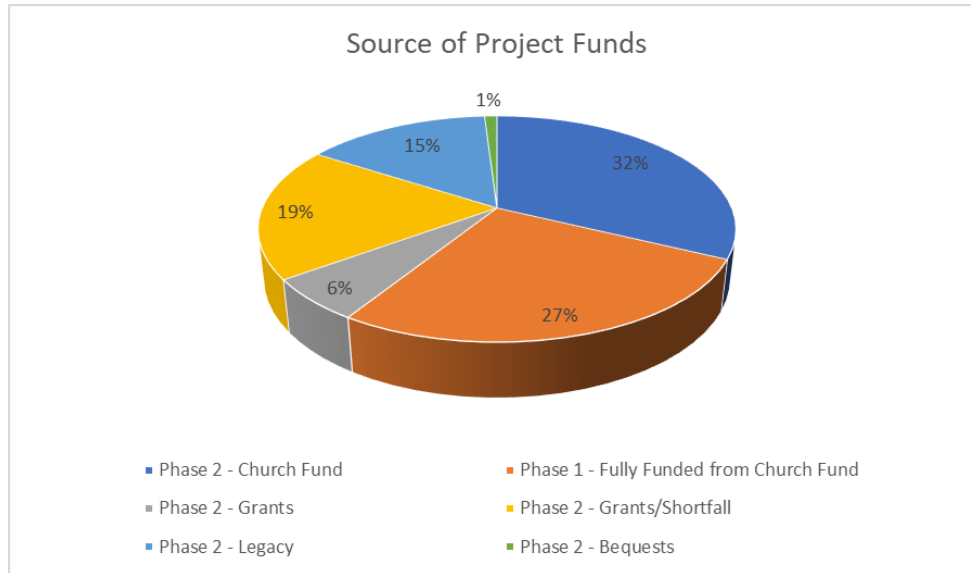
Funding/Spend Status

Phase 1 costs £90,050.51 including all professional fees and VAT

Phase 2 costs £182,134.80

Finishing Works £65,794

Total £337,980.11



Church Fund	£200,000 – including all Phase 1 work and professional fees
Legacy	£50,000
Bequests	£1,000
Gift Day	TBC
Grants	£19,679
Shortfall	£67,301

The project team are very grateful to the generosity of our sponsors including:

- The Bernard Sunley Foundation for their pledge of £10,000. For more information on this family grant making foundation working to raise the quality of life and provide greater opportunities for the young, the elderly, the disabled and the disadvantaged visit <https://bernardsunley.org/>
- The Hobson Charity for their contribution of £3,379 towards the Parquet flooring repairs. They are a family based grant giving charity—for more information on their work visit <https://hobsoncharity.org.uk/about-us/>
- Allchurches Trust for their grant of £6,300. For more information how they equip and empower Christian organisations visit <https://www.allchurches.co.uk/>



Sutton St James Church Hall Refurbishment

Summer Update

Project Costs:

Project costs following full tendering process and contractor selection:

Phase 1	Preliminaries and demolition	£5,267.75
	Damp proofing	£10,728.00
	Toilets	£7,734.00
	Flooring, doors and finishes	£7,619.00
	Staircase and office works	£6,863.00
	Mechanical works	£4,033.00
	Electrical works	£4,774.00
Phase 1 Total		£47,018.75
Contingency		£5,000.00
Phase 1 VAT		£10,403.75
Professional fees		£23,023.34
Professional fees VAT		£4,604.67
Phase 1 Total		£90,050.51
Phase 2	Preliminaries and demolition	£20,221.00
	Stonework	£4,344.00
	Damp proofing	£20,737.00
	Roof	£71,400.00
	Windows	£6,156.00
	Ceiling works and internal finish	£2,470.00
	Mechanical works	£10,625.00
	Electrical works	£15,826.00
Phase 2 Total		£151,779.00
Phase 2 VAT		£30,355.80
Phase 2 Total		£182,134.80
Finishing Works	Kitchen	£23,201.00
	Doors	£2,990.00
	Parquet floor repair	£3,379.00
	Decoration, furniture, and finish	£15,259.00
	Contingency	£10,000.00
	VAT	£10,965
Finishing Total		£65,794
Project Total		£337,980.11

Sutton St James Church Hall Refurbishment

Summer Update

We're on track to enable the key activities to recommence in early 2022 in their new improved home. In the meantime alternative accommodation including the main church building and scout and guide hut will be utilised wherever possible.

Spiritual Wellbeing – In normal times the Church Hall is used regularly for informal worship, often in conjunction with the Church or as an alternative to the main building.

As the Church is located at the top of a steep hill with limited vehicular access the Church Hall provides an alternative venue to our aging congregation.

Present uses for spiritual wellbeing include:

- **Coffee after Church** – a important time every Sunday after morning worship where the congregation meet together informally, share a time of fellowship and discuss the service.
- **Messy Church** – a nationwide initiative that has taken the place of Sunday School. Families meet together once a month for a time of crafting, playing, taking refreshments and worshipping together.
- **Family Breakfast** – an hour early on Sunday Morning, once a month, where families have breakfast together with a bible related activity sharing the Christian message and singing.
- **LIFT - Life In Fellowship Together** – an evening event where all are welcome to sit together once a month, share refreshment, worship and talk about relevant life issues.
- **Eating together** - Harvest Suppers, Lent Lunches and Church Breakfasts, these are limited by our current facilities.

It is intended that these will achieve a far wider reach after the improvement works.

As well as the positive impact on the faith and spiritual wellbeing of the current congregation who worship at Sutton St James it is envisaged that increased usage and visitors to the Hall will support the growth of the Church. Noticeboards and advertising will publicise groups and events on offer. The non-secular approach also welcomes neighbouring religious organisations to share the space including Langley Chapel and non-church goers. Other partnerships include those with the local Scout and Guide Group, village primary school and Ex-Servicemen's Club.

Physical Wellbeing and Lifestyle – The Hall provides a space for regular keep fit activities including yoga, keep fit and pilates. The groups are all open to all members of the community, providing accessible options for local people without the need for travel.

Private Meeting Space/ Office Facilities - A new proposal in the plan is to provide an office/private meeting space for the Vicar, Curates, Pastoral Worker and other volunteers. This is important to the Church community not least as our Curates live outside of the Parish. Provision of a space from which to work in close proximity to the main Church building will support their work in the Church and in the wider community during the second phase of their ministerial education. This private space will also enable multiple occupancy of the Hall extending the hours in which the space is available to the community.

Private Events - The Hall is available for private rental providing the local community with an affordable option for their celebrations and events, from birthday parties through to baptism celebrations and wakes. The Parochi-

Sutton St James Church Hall Refurbishment

Summer Update

Mental and Social Wellbeing – This is a crucial aspect of the current building use which is needed more than ever as society opens up again following the pandemic. A key objective of the project is to provide easily accessible opportunities for people to overcome feelings of isolation and loneliness and seek advice and learning opportunities. The investment in the Hall will enable far wider reach in this area.

The Hall hosts a diverse range of activities for local people which is key to the health of the local community. It provides a space for special interest groups including whist and bridge enthusiasts - whether avid players or just those looking to enjoy the social side of games. There are also U3A, Majong, and 'Make and Create' Craft Groups. The Hall is also the main monthly meeting place for the well-attended Women's Institute which has 70+ members. The Parish Council hosts its monthly meetings at the Hall and it is used as the local Polling Station.

Some activities in the Hall are specifically targeted to the older members of the community:

- 'Hobnob' meets fortnightly providing a venue for around 30 senior citizens to meet, with a cup of tea, for a ~ talk, a quiz, a cream tea or a travelogue.
- 'The Well' a weekly Coffee Morning.
- 'Sutton Golden Memories Group'.

Case Study Working in partnership with the Tytherington Family Worship Church the Sutton St James community launched the 'Golden Memories' group in September 2019 meeting fortnightly on a Thursday morning in the Church Hall. The overriding purpose of the group is to provide support to those living with dementia and their carers. Initially there were 6 principle volunteers and about 13 attendees (including carers). By February 2020 this had risen to 7 volunteers and an average of 21 attendees. The group hope to re-launch as soon as pandemic rules allow and further build on its initial success achieving a wider reach across the community.

A founding volunteer puts into words what the group means to our community:

'At our Sutton Golden Memories Group meetings a specialist trainer comes to lead an exercise class. Improving the health and fitness of our members helps to keep them as active and mobile as possible. Health and social care professionals sometimes attend our meetings to give talks and information to partners/ carers on help that they can receive in such areas as respite care, befriending services and funding for example. At every meeting we include music & singing together which is so important for the wellbeing of the individuals in our group.'

Sutton St James is pleased to be part of the 'Place of Welcome' initiative – a growing network of local community groups providing their neighbourhoods with places where all people feel safe to belong, connect and contribute. The refurbishment works will provide a more accessible and hospitable base for this service in the village.

An important aspect of these uses of the Hall are that they give community members the opportunity to volunteer - bringing with it the whole wealth of benefits of giving something back to the community. The Church Hall Committee are looking forward to the reopening of the Hall following the pandemic and are looking at ways to reengage the community. A volunteering drive is planned to encourage new volunteers, particularly from the younger generations.

The kitchen improvements are designed to promote the sharing of food and refreshments which in itself provides a warm welcome and sits at the heart of many community events. The larger, updated kitchen proposed will be fitted out with work surfaces, appliances and white goods to meet the current hygiene standards.

Sutton St James Church Hall Refurbishment

Summer Update

Next Steps

The Church Hall Committee are a team of volunteers with a mixture of skills and experience. On behalf of the PCC they will be responsible for ensuring that the project has a measurable impact on the beneficiaries (see page 6).

Key stakeholders have been engaged through all the stages of the project to date. As we move forward the local community will be engaged throughout the process:

- Autumn and Winter Project Updates
- Presentation material in the Church showcasing plans and timelines.
- An opening event to showcase the new community space available
- Use of local noticeboards to publicise plans, progress and events
- Launch a local initiative with a target of recruiting new volunteers, particularly from younger generations.
- Themed events around the 50 year anniversary of the purchase of the building by the Church and its change of use from a school. Celebrating the largest scale refurbishment in the building's history. All generations that have benefited will be able to celebrate together.
- Publicity throughout the project and beyond via social media, Church news and the new monthly local paper – The Grapevine. All these and more will be used to publicise the work and encourage groups to use the new space.
- Press releasees around critical success points e.g. Macclesfield Express
- Diocese newsletters and media